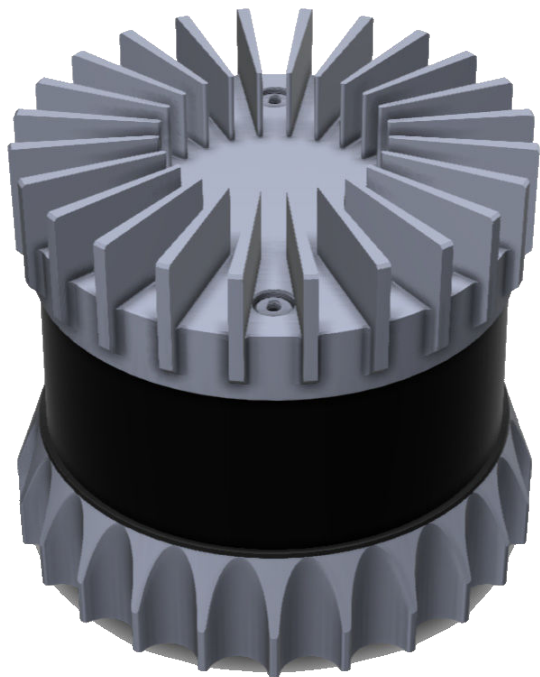


RESEPI WISPR Ouster OS1-64



RESEPI Overview

RESEPI™ (Remote Sensing Payload Instrument) is a sensor-fusion platform designed for accuracy-focused remote sensing applications. RESEPI utilizes a high-performance Inertial Labs INS (GPS-Aided Inertial Navigation System) with a tactical-grade IMU and a high-accuracy single or dual-antenna GNSS receiver, integrated with a Linux-based processing core and data-logging software. The platform also provides a WiFi interface, optional imaging module, and external cellular modem for RTCM corrections. RESEPI can be operated by a single hardware button or from a wirelessly connected device via a simple web interface.

RESEPI With Ouster OS1-64

RESEPI, equipped with the OUSTER OS1-64 REV7 LiDAR, is one of the latest offerings from Inertial Labs and one of the most unique and powerful in nature. This lightweight LiDAR features multiple scanning modes and operational workflows that allow users to control their collection procedures and accuracy. With an extended vertical FOV of 45° and compact design, you can be confident that your projects can be completed with minimal time spent in data collection.

Applications

The OS1-64 payload is optimized for integration with the WISPR SkyScout 2 Series, enabling reliable data capture across a wide range of mission-critical applications. When deployed on SkyScout 2/2+, this sensor supports high-precision workflows including utility and power-line mapping, construction volumetrics, government applications, site surveying, precision agriculture, forestry analysis, and mining operations.

The SkyScout 2's stable flight characteristics and payload compatibility ensure consistent performance in complex environments, making it a versatile solution for operators who require accurate, repeatable results across diverse industries.

System

System Vertical Accuracy	3 - 5 cm
Precision	4 – 6 cm
Precision after Noise Removal	2 – 4 cm
Recommended AGL	Up to 100m
Weight	1kg (without camera) 1.4kg (with camera)
External Storage	256GB USB
Dimensions	20.6 x 16.5 x 14.2 (cm)
Max Flight Time	33 minutes
System Computer	Quad Core, 1GB RAM, 8GB eMMC
Operational Voltage Range	9-45V
Power Consumption	17W

WISPRSM
Power to the Pro

wisprsystems.com • 662.267.1551
sales@wisprsystems.com



